

Gewicht

Weight / Poids / Peso / Peso / Pesos / Macca

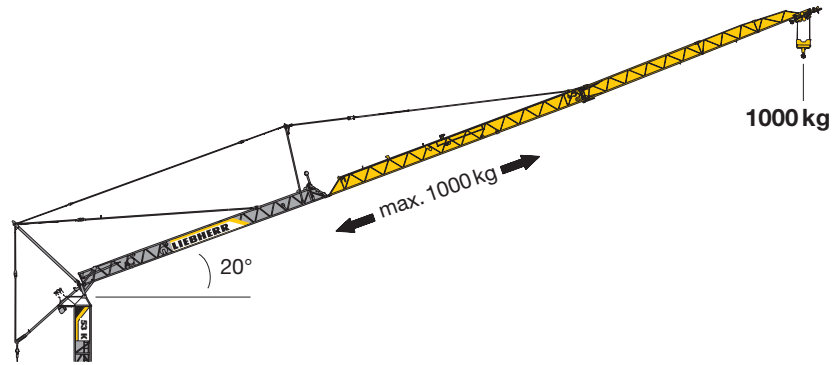
	r = 3,2 m	24000 kg*		13300 kg
	r = 2,5 m	28000 kg*		

* siehe Betriebsanleitung. / see instruction manual. / voir manuel de service. / vedi manuale d'istruzione. / ver manual de instrucción. / ver manual de instruções. / см. инструкцию по эксплуатации.

Ausladung und Tragfähigkeit

Radius and capacity / Portée et charge / Sbraccio e portata
Alcances y cargas / Alcance e capacidade de carga / Вылет и грузоподъемность

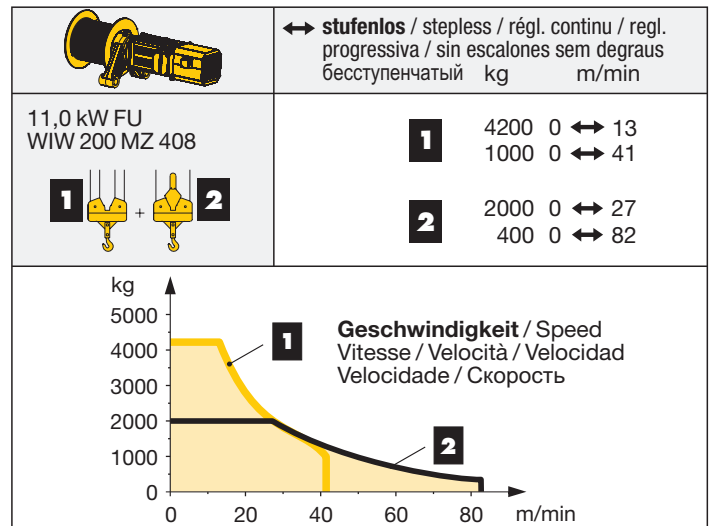
m	m/kg	m/kg																			
		14,0	16,0	18,0	20,0	22,0	24,0	26,0	28,0	29,0	30,0	31,0	32,0	33,0	34,0	35,0	36,0	37,0	38,0	39,0	40,0
40,0	2,6 – 24,4 2000	2000	2000	2000	2000	2000	2000	1850	1700	1630	1560	1500	1450	1390	1340	1300	1250	1210	1170	1140	1100
37,0	2,6 – 25,8 2000	2000	2000	2000	2000	2000	2000	1980	1820	1740	1670	1610	1550	1490	1440	1390	1340	1300			
34,0	2,6 – 26,7 2000	2000	2000	2000	2000	2000	2000	2000	1890	1810	1740	1680	1610	1550	1500						
28,0	2,6 – 28,0 2000	2000	2000	2000	2000	2000	2000	2000	2000												
m	m/kg	m/kg																			
		14,0	16,0	18,0	20,0	22,0	24,0	26,0	28,0	29,0	30,0	31,0	32,0	33,0	34,0	35,0	36,0	37,0	38,0	39,0	40,0
40,0	2,6 – 23,6 2000	2000	2000	2000	2000	2000	1960	1770	1610	1540	1470	1410	1350	1300	1250	1200	1160	1110	1070	1040	1000
37,0	2,6 – 24,9 2000	2000	2000	2000	2000	2000	2000	1900	1730	1650	1580	1520	1450	1400	1340	1290	1250	1200			
34,0	2,6 – 25,7 2000	2000	2000	2000	2000	2000	2000	1970	1800	1720	1650	1580	1520	1460	1400						
28,0	2,6 – 28,0 2000	2000	2000	2000	2000	2000	2000	2000	2000												
m	m/kg	m/kg																			
		14,0	16,0	18,0	20,0	22,0	24,0	26,0	28,0	29,0	30,0	31,0	32,0	33,0	34,0	35,0	36,0	37,0	38,0	39,0	40,0
40,0	2,6 – 13,1 4200	3850	3270	2830	2480	2200	1970	1780	1620	1550	1480	1420	1360	1300	1250	1200	1160	1120	1080	1040	1000
37,0	2,6 – 13,7 4200	4090	3480	3010	2640	2350	2110	1900	1730	1660	1590	1520	1460	1400	1340	1290	1250	1200			
34,0	2,6 – 14,1 4200	4200	3600	3120	2740	2440	2190	1980	1800	1720	1650	1580	1520	1460	1400						
28,0	2,6 – 15,3 4200	4200	3970	3440	3030	2690	2420	2190	2000												



Antriebe

Driving units / Mécanismes d'entraînement / Meccanismi / Mecanismos / Mecanismos / Приводы

	U/min. 0 ↔ 0,8 sl./min tr./min	3,0 kW FU
	0 ↔ 51,0 m/min 0 ↔ 52,0 m/min	2,2 kW FU ¹⁾ 3,0 kW FU ²⁾
	0 ↔ 25,0 m/min	2 x 2,2 kW FU
	0 – 45°, 95 sec.	2,0 kW



BGL	C.0.08.0050	C.0.08.0050
------------	-------------	-------------

380 – 440 V	50/60 Hz	16 kVA (FU)
-------------	----------	-------------

¹⁾ Serie / Series / Série / Serie / Serie / Série / серия

²⁾ Option mit 20° Steilstellung / Option with 20° luffed position / Option avec relevage à 20° / Opzione con impennamento a 20° / Opción pluma inclinada a 20° / Opcional com lança inclinada 20° / опция с положением стрелы под углом 20°

